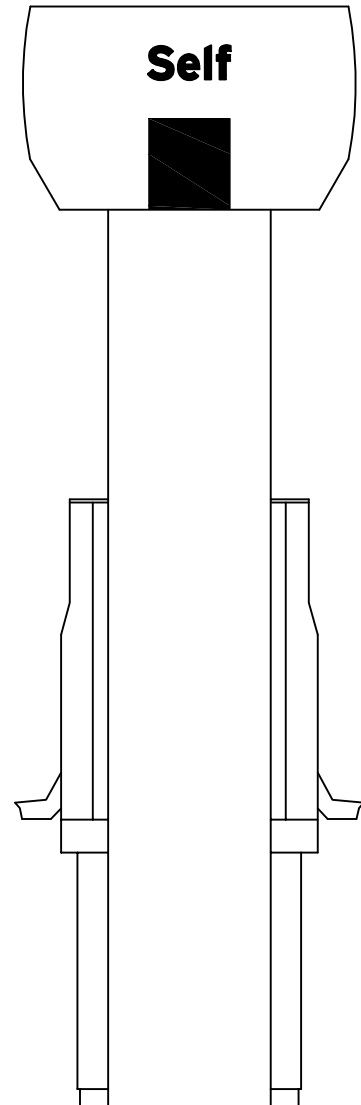
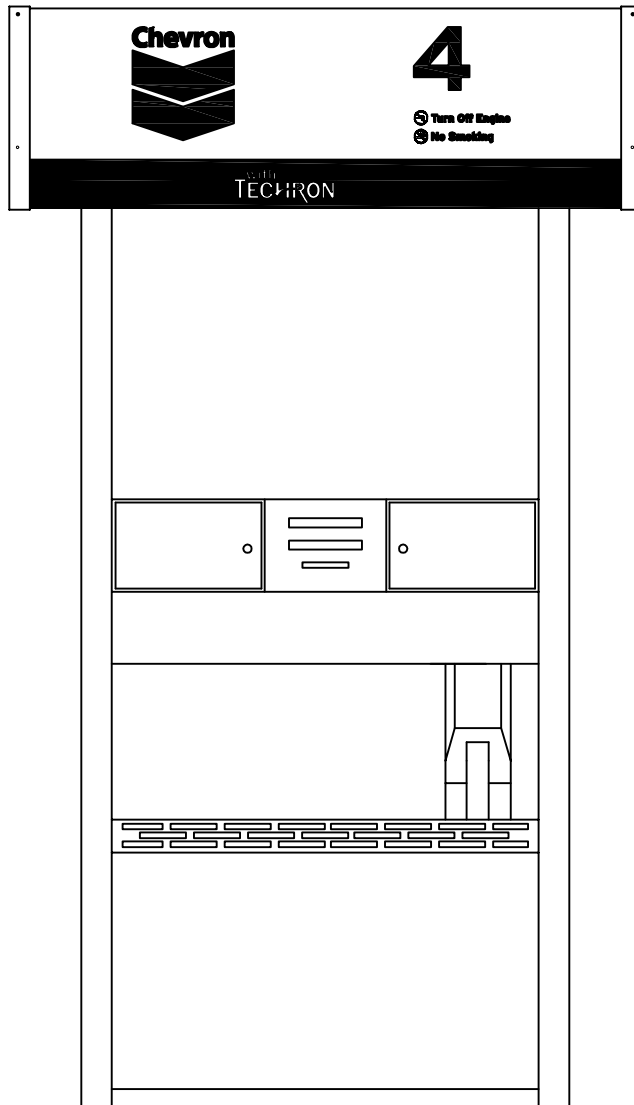


INSTALLATION INSTRUCTIONS FOR PROPRIETARY VALANCE

JDE# 302171



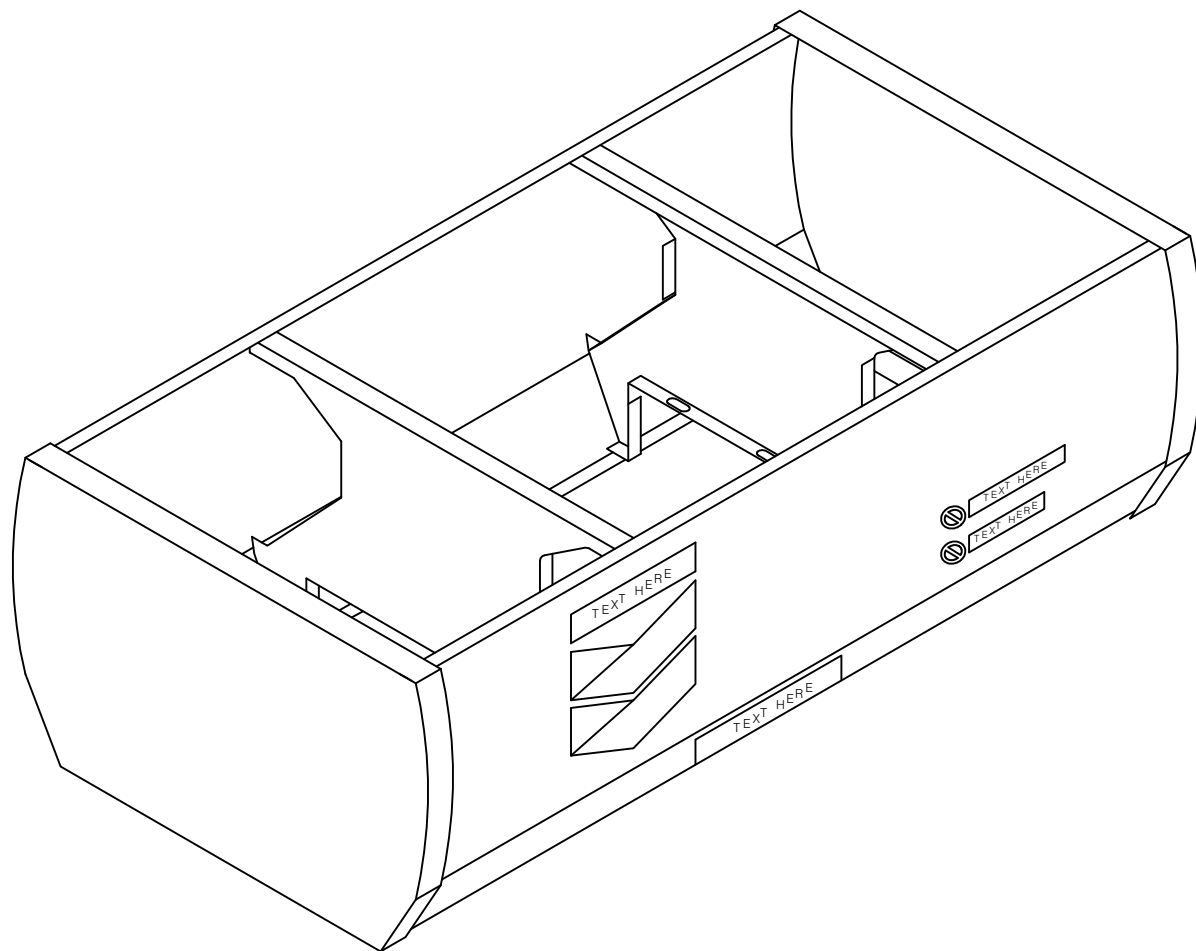
Please review site plans before proceeding. Contact **LSI Graphic Solutions Plus Customer Service** at **1-(800) 678-2001** for installation support.

Read through all of the instructions prior to beginning installation, and verify (using the packing list) that all parts have been received and are in good condition.

The Proprietary Valance ships knock down (disassembled) and requires field assembly. Four sizes are available - be sure you have the correct valance to fit your dispenser. Refer to the chart.

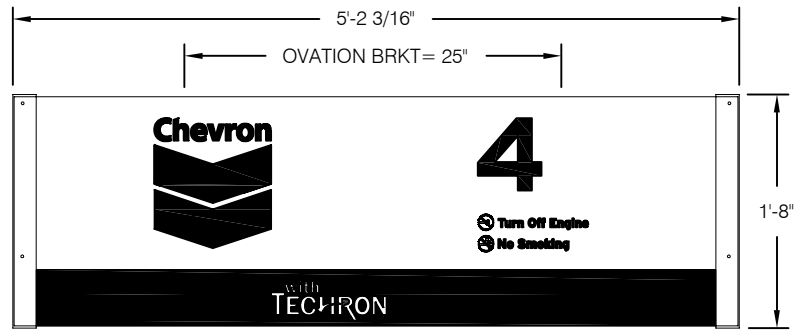
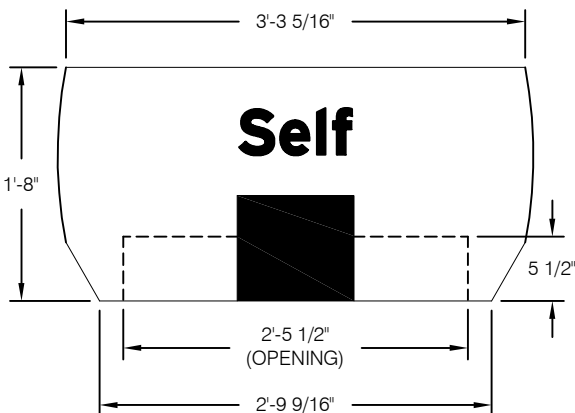
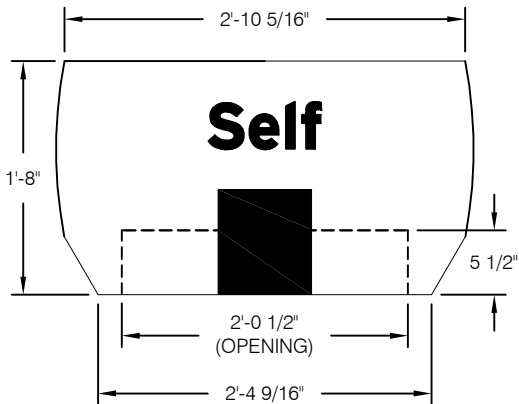
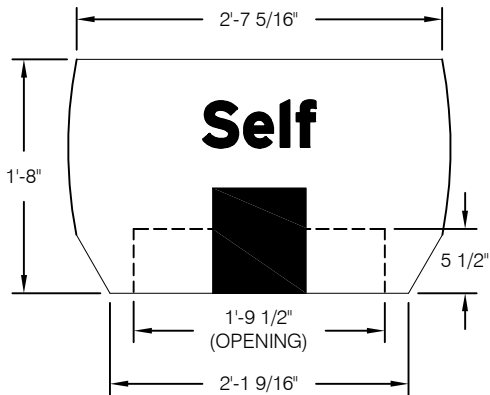
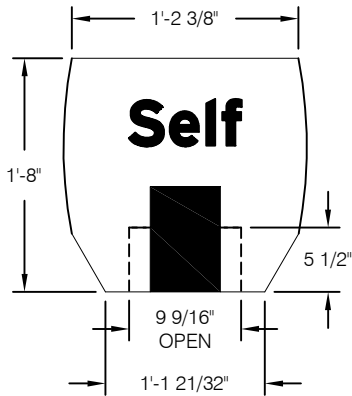
The Proprietary Valance can be assembled on the ground or workbench and set in place on the dispenser, or assembled on the dispenser. These instructions are for on the dispenser assembly. The only change for off the dispenser assembly will be to measure and hold or use a fixture to space the supports correctly.

Remove the parts from the carton and check for damage and correct quantities.



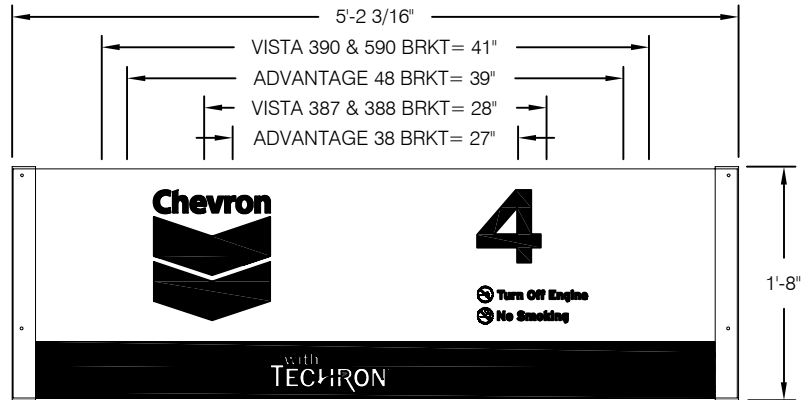
Shortages or Freight Damage Claims

All shortages must be reported to LSI Graphic Solutions Plus within **seven** days after receipt of material. Inspect shipment before letting the carrier leave. Buyer is responsible for placing claim against the damage or lost goods during shipment. Products damaged during shipment require a freight claim to be filed with freight carrier within **seven** days of receipt of goods on site. Freight damaged goods are not covered under SGI's warranty.



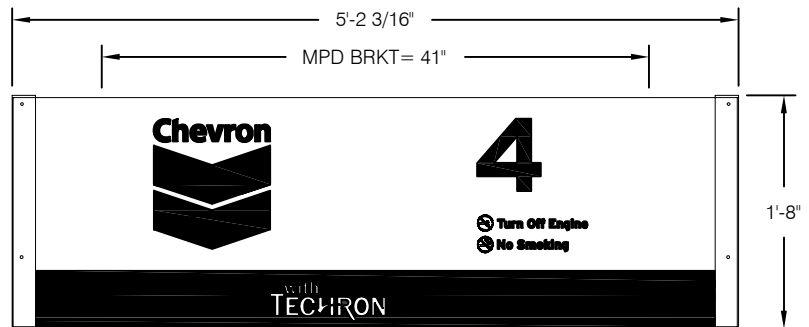
NARROW VALANCE

FITS: OVATION SERIES AND OVATION IX



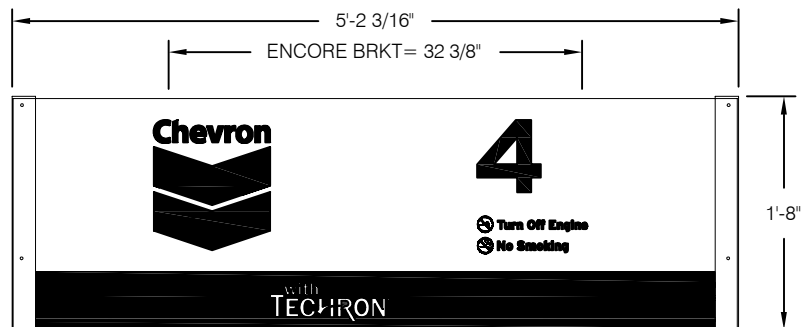
REGULAR VALANCE

FITS: GILBARCO ADVANTAGE 48, GILBARCO ADVANTAGE 36 w/overhang, DRESSER WAYNE VISTA 580, DRESSER WAYNE VISTA 390 (POST 1992)



WIDE VALANCE

FITS: GILBARCO MPD SERIES



EXTRA WIDE VALANCE

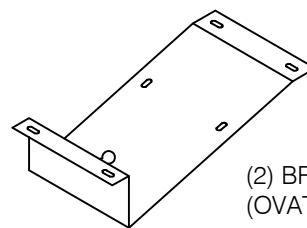
FITS: DRESSER WAYNE MGD 390 (PRE 1992), ENCORE 550, ENCORE 300, ENCORE 500, ENCORE S SERIES

The following parts are used for all styles except for the OVATION brackets.

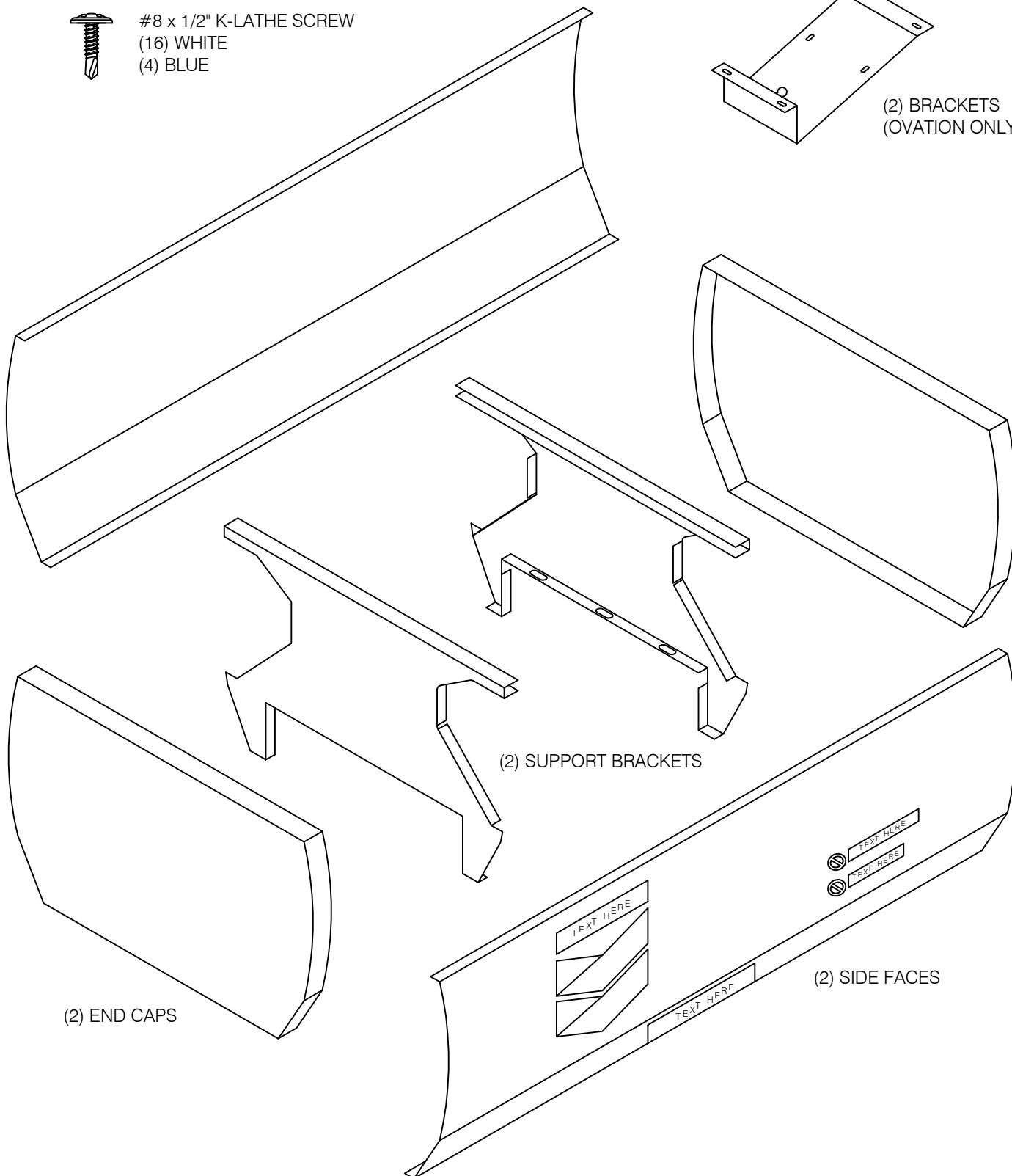
Additional braces and hardware may be required for South Florida. Please contact LSI Customer Service for the added cost options.



#8 x 1/2" K-LATHE SCREW
(16) WHITE
(4) BLUE



(2) BRACKETS
(OVATION ONLY)



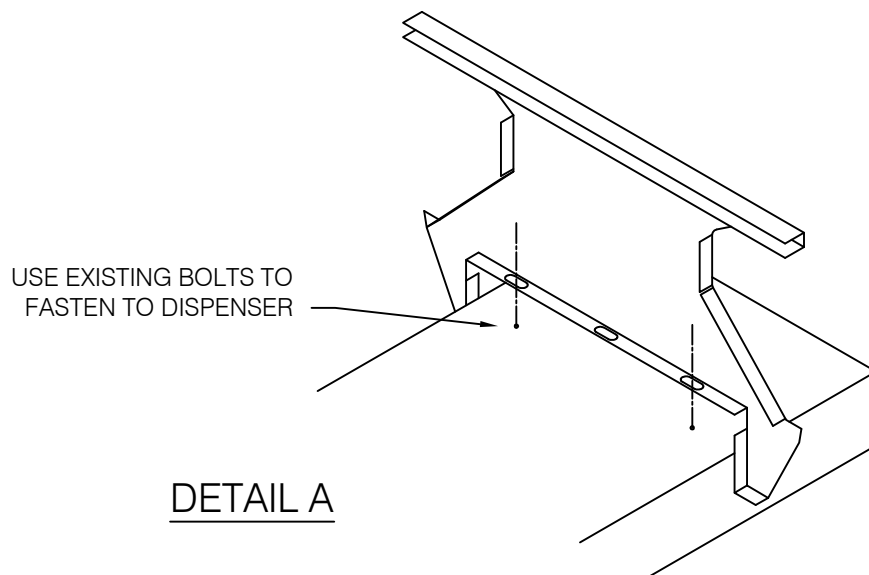
(2) END CAPS

(2) SUPPORT BRACKETS

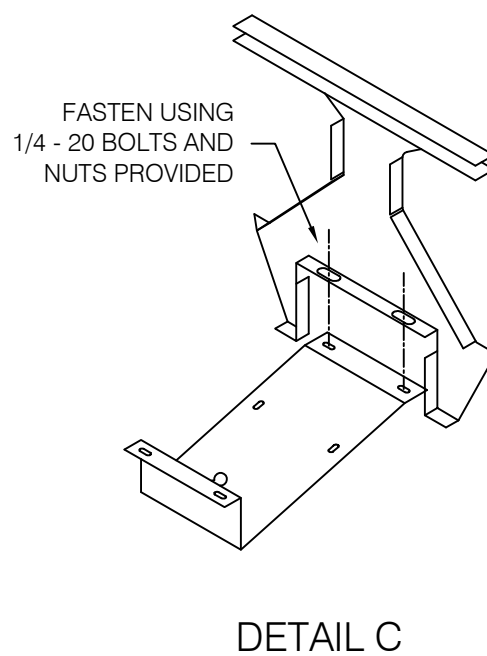
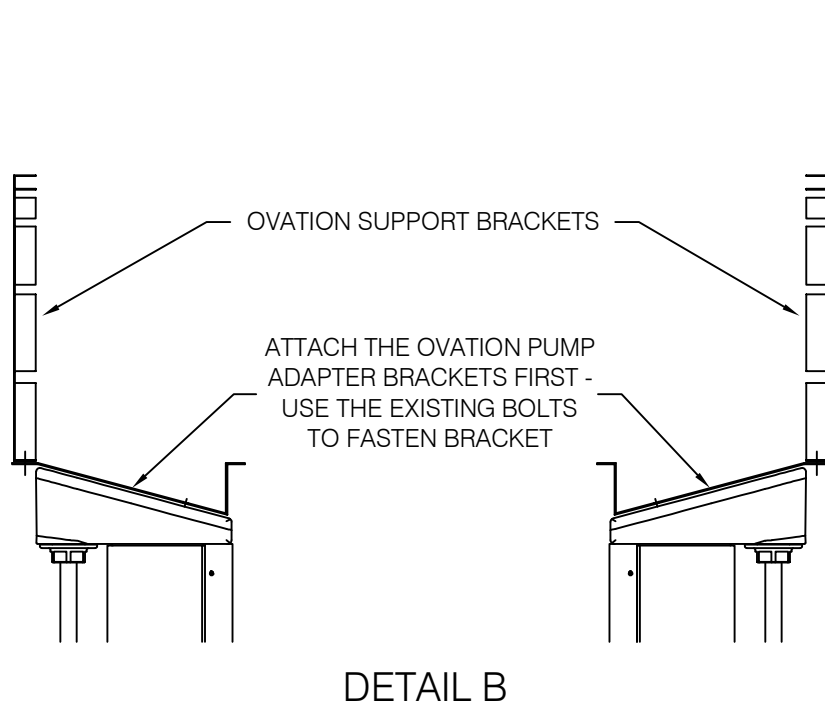
(2) SIDE FACES

Step 1.

Place the support bracket on the dispenser and attach using the existing bolts for lifting lugs. The slotted holes in the bottom flange should line up to the threaded holes in the top of your dispenser. If not, it may be necessary to drill and bolt through the top of the dispenser cover. If this is required use extreme caution not to drill into any piping or electrical housing in the top.

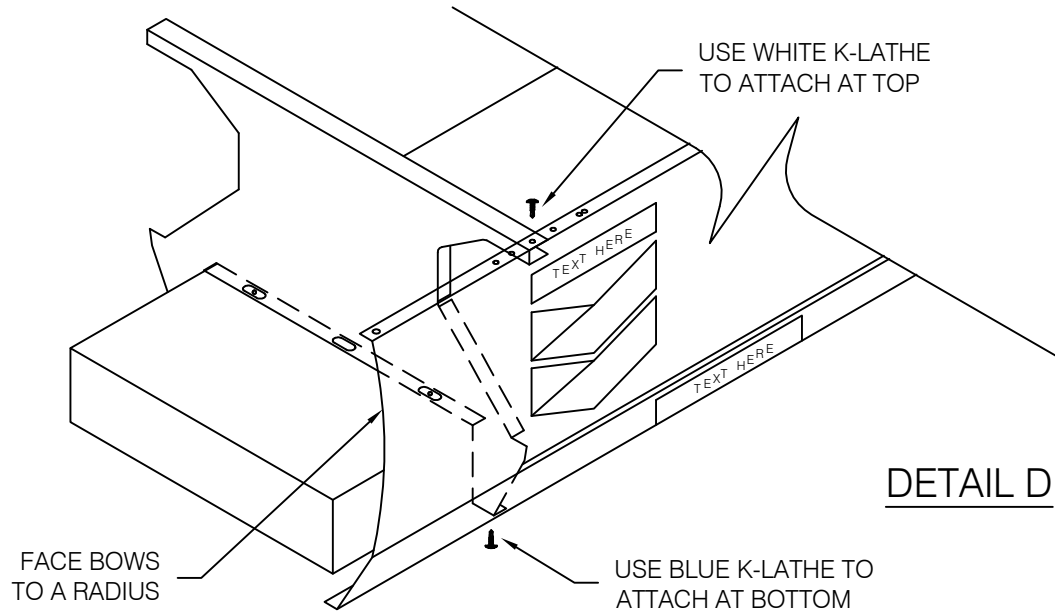


NOTE: For OVATION Dispensers, the pump head adapter brackets have to be attached first. Then the support brackets attach to the adapter brackets.



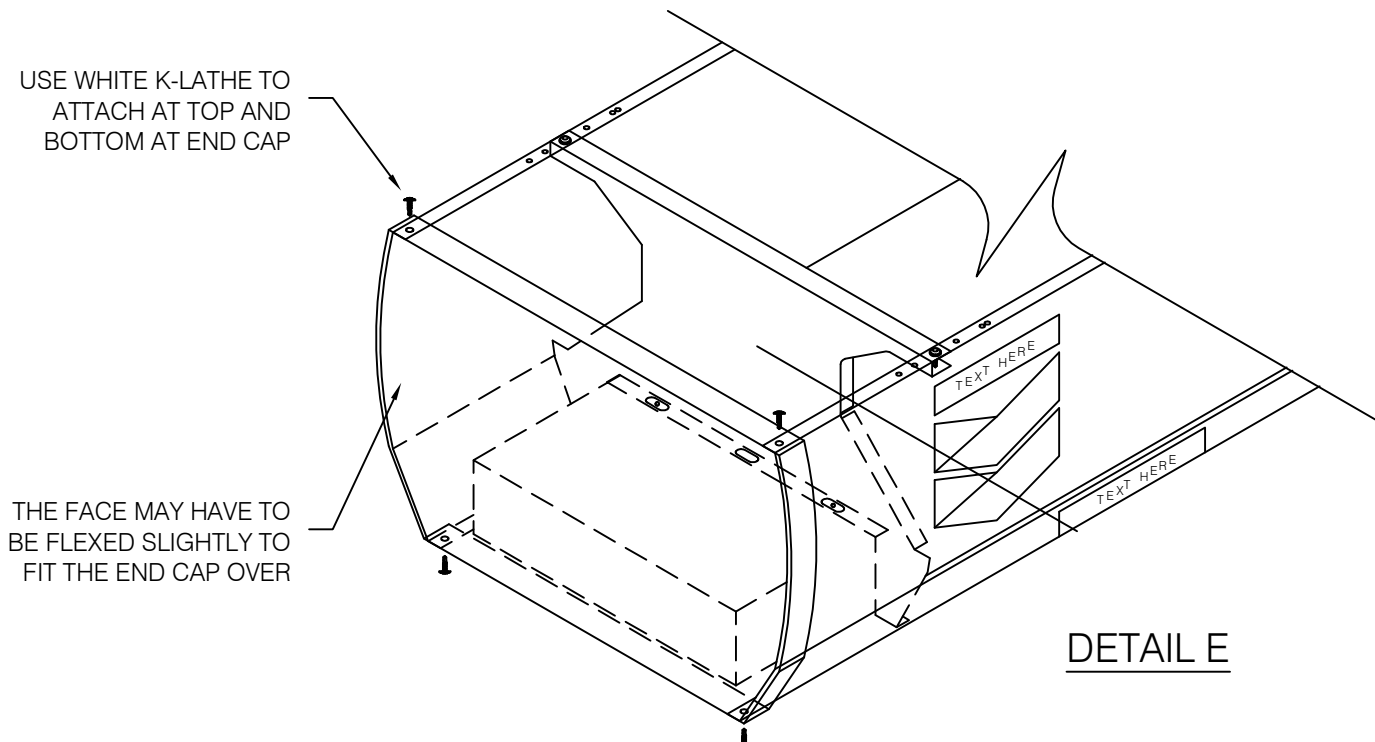
Step 2.

Attach the face to the support brackets top and bottom using #8 X 1/2" K-Lathe screws. The holes in the 1-1/2" flanges should align to the support bracket (if not, new 1/8" dia. holes should be drilled). Use white K-Lathes on the top and drill into the .063 aluminum bracket. Pull the face up tight to the flanges of the bracket for proper fit. The face should bow at a curve in the top white area and fit flat in the bottom blue bevel. Use blue k-lathes and attach the bottom flanges.



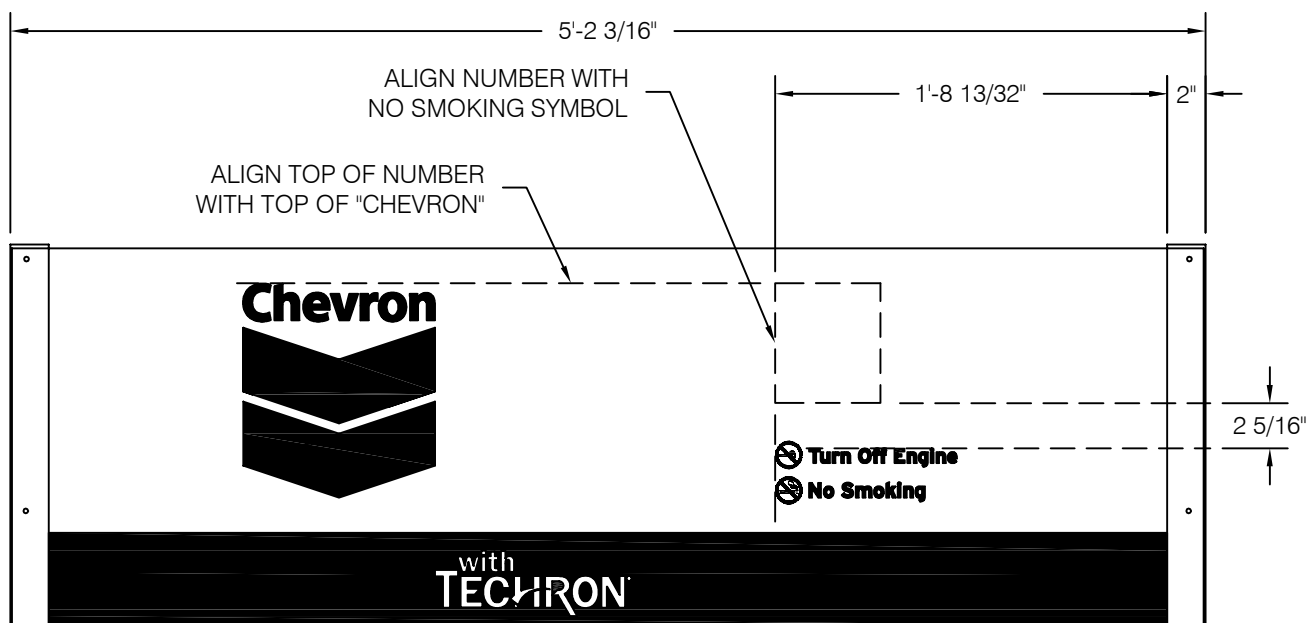
Step 3.

Slide the end caps over the side faces until flush. Attach with white k-lathe screws top and bottom.

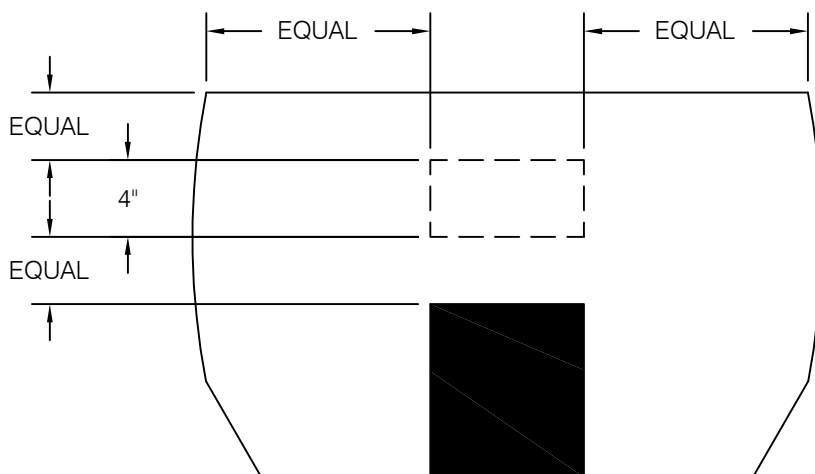


Step 4.

The pump numbers and service mode decals ship separately to apply in the field. Refer to instructions with your regular decals for placement. General placement and instructions are noted below.



DETAIL F



DETAIL G